

# **Steinberg MR816 CSX / MR816 X Firmware V1.10 Update Guide (For Mac OS X )**

---

Thank you for choosing a Steinberg product.

The MR816 CSX / MR816 X Firmware Updater lets you update the firmware of the MR816 CSX / MR816 X.

This document explains how to update the firmware of the MR816 CSX / MR816 X by using a Macintosh computer connected to the MR816 CSX / MR816 X via FireWire.

## **■ Precautions**

- **Please note that the MR816 CSX / MR816 X may be damaged if you fail to follow these instructions properly, or turn off the MR816 CSX / MR816 X or disconnect the cable while the update is in progress.**
- The user assumes full responsibility for the update.
- If the update fails, and the MR816 CSX / MR816 X still does not operate correctly even after you execute the update once again, please contact your Yamaha dealer.
- This software and documentation are the exclusive copyrights of Yamaha Corporation.
- Reproducing or modifying all or parts of this software or its documentation without permission is strictly prohibited.
- The screen shots in this guide are for use with this update procedure only and may be different from the actual screen shots.
- Apple, Mac and Macintosh are trademarks of Apple Inc., registered in the U.S. and other countries.
- FireWire, the FireWire symbol and FireWire logo are trademarks of Apple Inc., registered in the U.S. and other countries
- The company names and product names in this document are the trademarks or registered trademarks of their respective companies.

## ■ System requirements

Your system must satisfy the following requirements in order to update successfully.

A Macintosh computer equipped with the following conditions:

- Yamaha Steinberg FW Driver is installed and works properly on the computer.

## ■ Included Files

This folder contains the following files:

•update_guide_mac_en	This document (PDF file)
•releasenotes_en	Describes the update history
•MRUpdate	The update program
•MR_MAIN_V110.MID	The update data

## ■ Preparing for the update

Before starting the update program, quit all other programs. While the update is in progress, do not start any other programs or switch between windows.

If your computer enters Sleep or Energy Save modes, data transfer to the MR816 CSX / MR816 X may stop. Therefore, you should disable these functions to prevent this from happening. We also recommend that you do not use any screen saver or similar background programs.

Make sure that "MRUpdate" and "MR\_MAIN\_V110.MID" reside in the same folder.

Even if you intend on connecting multiple MR816 CSX / MR816 X devices to the computer, connect only one device when updating. Only one device can be updated at a time.

## ■ Update procedure

1. **Connect a computer directly to a MR816 CSX / MR816 X (without using a hub) by using an FireWire cable.**

Be sure to disconnect all other FireWire devices, except the one to be updated.

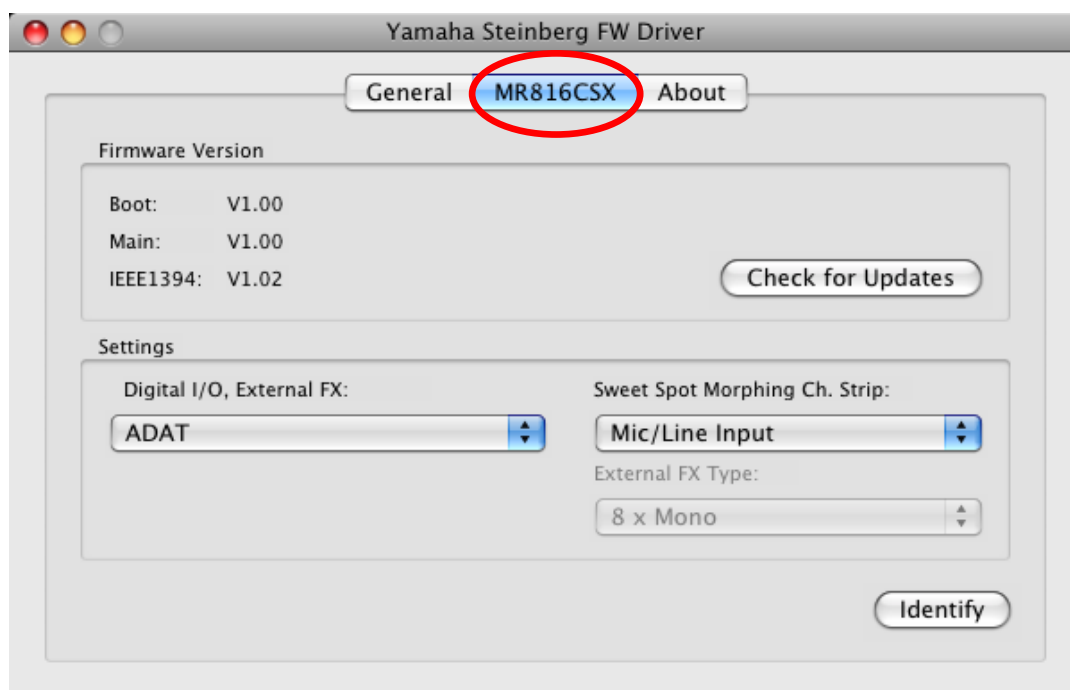
2. **Turn the power on for the MR816 CSX / MR816 X.**

Wait until the Word Clock Source Lamps and Sample Rate Lamps of the MR816 CSX / MR816 X flash in order then stop.

3. **After the lamp flashing is completed, open the control panel of the Yamaha Steinberg FW Driver by either of the following methods:**

- Select [System Preference...] → [Yamaha Steinberg FW]
- Select the Application folder → Utility folder → Audio MIDI Setup → Set “Properties” to “Yamaha Steinberg FW”, then click [Configure Device]

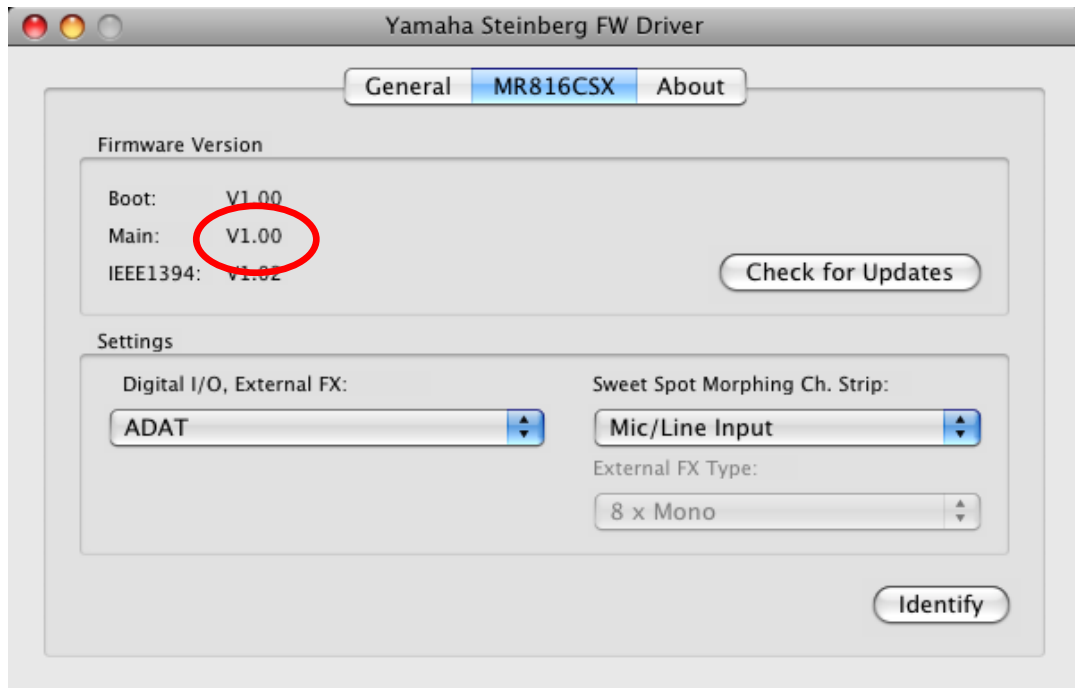
4. **Click the tab of the device for which you want to update the firmware.**



**5. Confirm the Main version number in the Firmware Version section.**

In case of version 1.10 or later, the update is not required.

In case of versions earlier than 1.10, go on to step 6.



**6. Set the two headphone levels of the MR816 CSX / MR816 X to the minimum.**

**7. Turn the power off for the MR816 CSX / MR816 X.**

**8. Simultaneously hold down the [QUICK CONNECT] button 2 and Multi Function encoder knob 1 and turn the power on for MR816 CSX / MR816 X.**



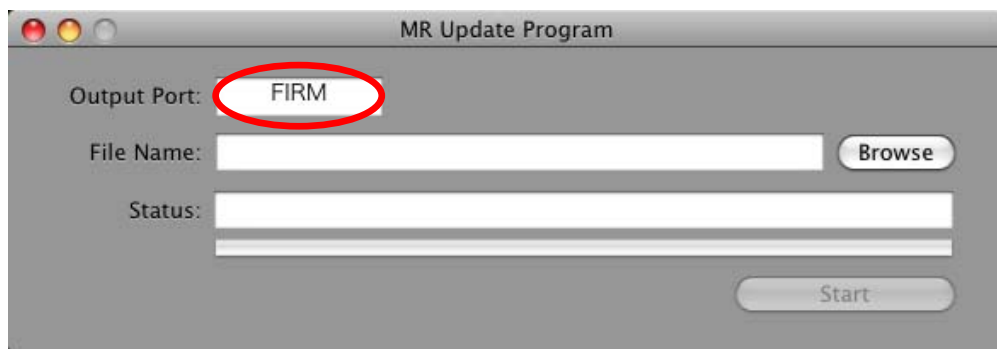
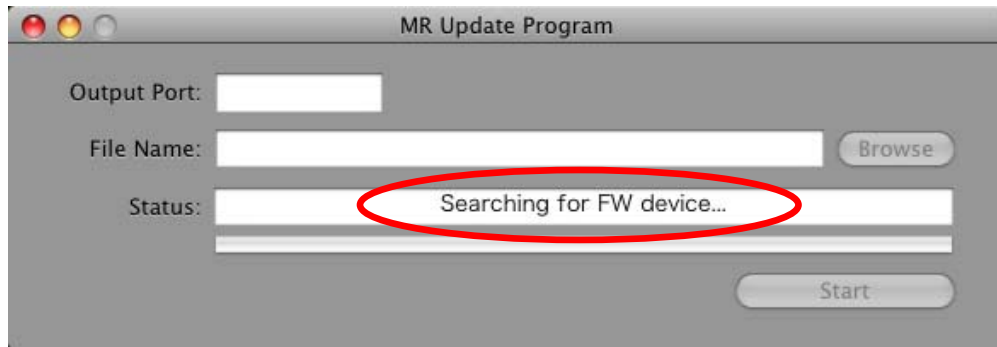
The MR816 CSX / MR816 X will boot up in update mode. When booting up in update mode, the front panel indicators of the MR816 CSX / MR816 X will light as follows:

- [QUICK CONNECT] button 2 lights up
- All of the [SIG/PEAK] LEDs light up
- The LEDs of the Multi Function encoder knobs 1 and 2 light up in sequence clockwise.



**9. Double-click “MRUpdate” to start the program.**

When the program works correctly, “Searching for FW device...” will briefly be shown in the Status column for a short time. Then, the Output Port column will display “FIRM.”



- If an error message appears, check the cable connection and system requirements, and start the program again.
- For details about the error messages, see page 7.

**10. Select the Update data to click the [Browse] button in the dialog.**

The Update data is “MR\_MAIN\_V110.MID” which is in the same folder as “MRUpdate.”



- If the update file is not correct, the Status column will display “File format error!!”

**11. Click the [Start] button to start the update process.**

An “Installing...” message will appear in the Status column.

The update process may take approximately four minutes to complete.



When the update data transfer is completed, the message “Transfer complete. Please wait until MR816 CSX / MR816 X rebooting completion” will appear in the Status column. **Keep in mind however, that the whole update process is not complete until rebooting.** While the update is in progress, never turn off the device or disconnect the cable. Please note that the device may be damaged if such a situation happens accidentally while the update is in progress.

**12. After the MR816 CSX / MR816 X is restarted automatically, press [X] button to quit the MR Update Program.**

**■ Confirming the update**

Confirm the version information by following the procedure below.

**13. Open the control panel of the Yamaha Steinberg FW Driver by the same method as in step 3 above.**

**14. Click the tab of the device for which you updated the firmware.**

**15. Confirm that the Main version number in the Firmware Version section is V1.10.**

## ■ Error messages



- If the same error message appears each time you try to update, the device may need repairing, in which case you should contact your Yamaha dealer.

Can not get FW interface!!	No driver is installed. Make sure to install the Yamaha Steinberg FW Driver correctly.
FW device not found!! Can not open FW device!! Can not get FW port information!! FW port not found!! Can not open FW port!! Can not get FW device information!!	The computer cannot recognize the MR816 CSX / MR816 X because the MR816 CSX / MR816 X is not connected or the MR816 CSX / MR816 X is powered off. Make sure to connect the MR816 CSX / MR816 X to the computer via an FireWire cable, and also make sure that the MR816 CSX / MR816 X is turned power on in update mode.
File format error!!	Illegal data was selected.
FW communication error!!	The update program cannot completely send the data to MR816 CSX / MR816 X due to a problem in the update process, such as disconnection of the FireWire cable, etc. Quit the MRUpdate, and update again by repeating the procedure from Step 1 in the "Update Procedure" section above.